

ELECTRICAL

Matching Impedance: 75 ohm unbalanced coaxial to 120 ohm balanced twisted pair.
 Bit Rates: 2Mbit/s and 8Mbit/s as ITU-T Recommendation G.703 Line Code.
 Return Loss: 2Mbit/s exceeds G.703 requirements (>25dB @ 51 ~ 3072kHz)
 8Mbit/s as per G.703 requirements.
 Insertion Loss: <0.16dB for 2 Mbit/s service (51 ~ 3072kHz)
 <0.3dB for 8Mbit/s service (211kHz ~12.672MHz)
 Cross Talk: >80dB from 51kHz to 12.672MHz between 2 baluns mounted 20mm apart.
 Pulse Shape: 2Mbit/s and 8Mbit/s as per G.703
 Isolation Voltage: 250V DC for 1 minute between windings.
 Signal Levels: 2.37V nominal peak voltage for 2Mbit/s and 8Mbit/s at the coaxial end as per G.703

MATERIALS

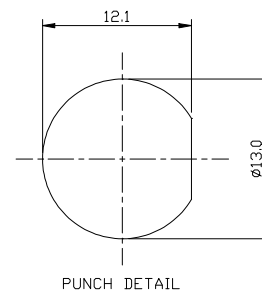
Outer Contact: Brass Alloy AS 1567 Type 385. Finish Cu/Ni
 Insulator: PTFE
 Inner Contact: Phosphor Bronze. Finish Cu/Ni/Au
 Body and Nut: Brass Alloy AS 1567 Type 385. Finish Body Cu/Ni/Sn, Nut Cu/Ni
 Outer Sleeve and Base Moulding: Noryl Black
 IDC Moulding: Polyester White

COAXIAL CONNECTOR (75 ohm)

BNC Series: To IEC 169-8.

IDC CONTACTS

Wire Size: 0.4mm to 0.65mm conductor diameter,
 Insulation diameter 0.7mm to 1.4mm.
 Finish: Silver plated
 Mating Cycles: 50



ENVIRONMENTAL

Working Temperature: -30 °C to 75 °C

TERMINATION

IDC Termination: Krone Terminating Tool
 Panel Mounting: Spanner 16mm A/F.

